

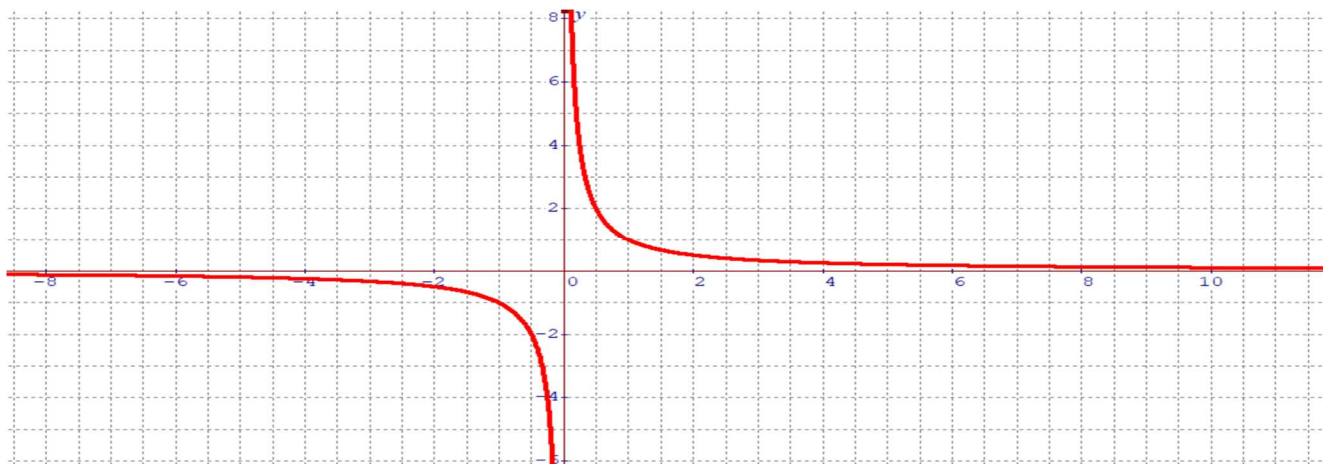
Name: _____

Pre Calculus 12 Ch1 Review on Transformations

1. The following graph is for the function $y = \frac{1}{x}$, use the grid to graph the functions below. Indicate the transformations required to reach the functions below:

a) $y = \frac{1}{x+2} - 3$

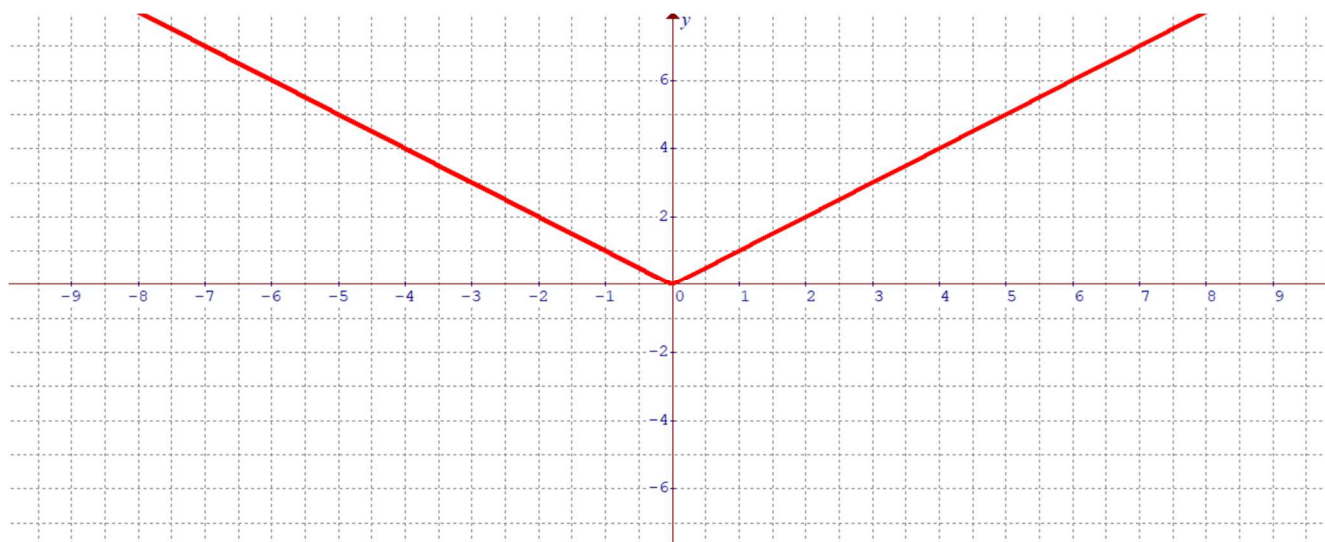
b) $y = \frac{1}{2x+3} + 1.5$



2. The following graph is for the function $y = |x|$, use the grid to graph the functions below. Indicate the transformations required to reach the functions below:

a) $y = 2|3x-4| - 1$

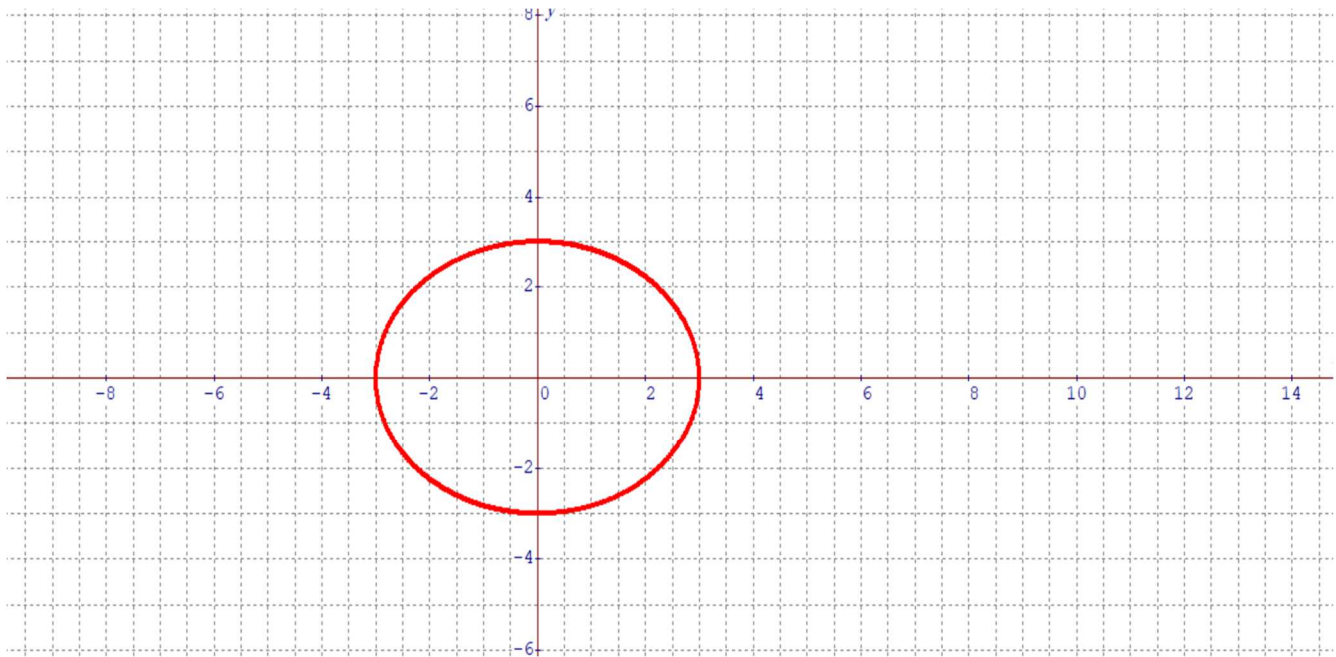
b) $y = -2\left|\frac{x}{2} + 3\right| - 3$



3. The following graph is for the function $x^2 + y^2 = 9$, use the grid to graph the functions below.
Indicate the transformations required to reach the functions below:

a) $(x-3)^2 + (y+2)^2 = 9$

b) $\left(\frac{x}{2}-3\right)^2 + (2y+4)^2 = 9$



4. The following graph is for the function $y = \sin \frac{2\pi}{5} x$, use the grid to graph the functions below.

Indicate the transformations required to reach the functions below:

a) $y = 3 \sin \frac{2\pi}{5} (x-2)$

b) $y = -2 \sin \frac{2\pi}{5} (x+3) + 4$

