

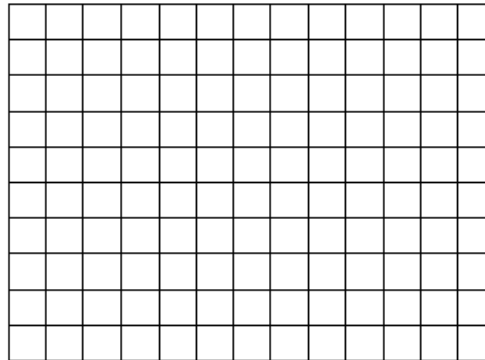
Name: \_\_\_\_\_

Date: \_\_\_\_\_

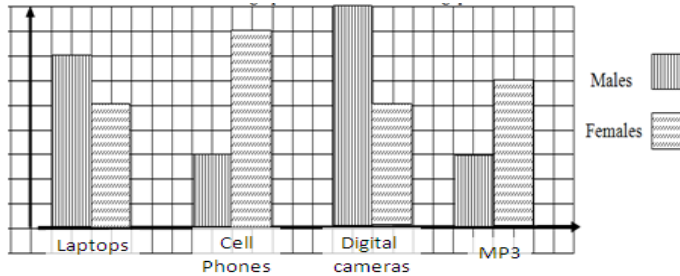
**HW: Section 5.1 part 2 Drawing Bar Graphs, Circle Graphs, Line Graphs, Stem Plots**

1. A survey was conducted to research how many of each drink was sold at a local pop machine in each week. The following table illustrates the results. Use the data to draw a Bar Graph.

Pop Drink	Number of Cans
Coke	50
Sprite	30
Nestea	80
Pepsi	70

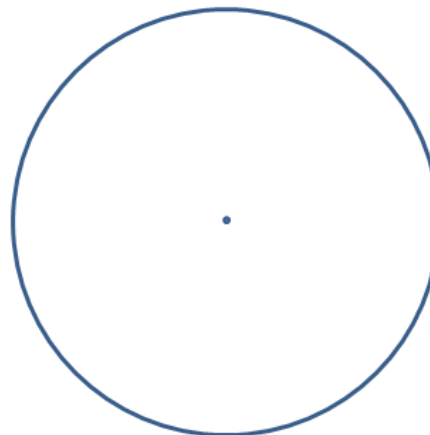


2. The following double bar graph illustrates the use of technology by 50 male and 50 female students at UBC. The increments go up by 5 ppl. Use the bar graph to answer the following questions.

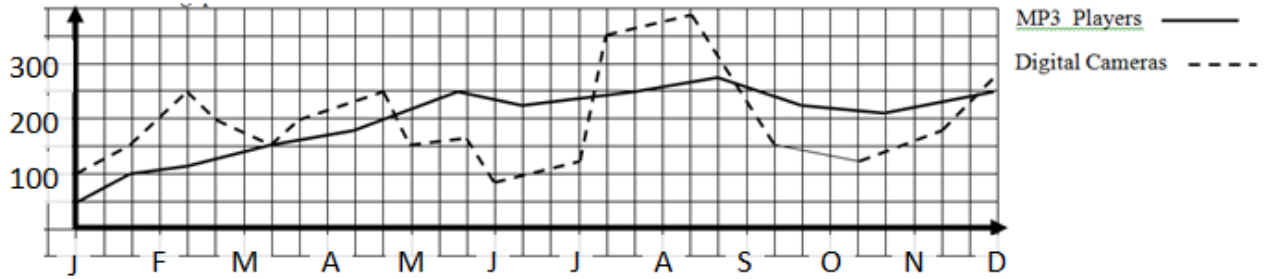


- In which categories do females have a higher percentage than males?
  - What percentage of males use a laptop computer?
  - What percentage of females use a cell phone?
  - Are females or males more likely to be using digital cameras?
3. A survey asked 500 University students what they think is the biggest reason for procrastinating in their life. The results are shown in the table. Use the following data to draw a Circle graph. (Procrastinating means wasting time doing useless things)

Activity	Number
ICQ	50
MSN Messenger	50
Television	110
Computer/Video Games	170
Phone	80
Shopping	40

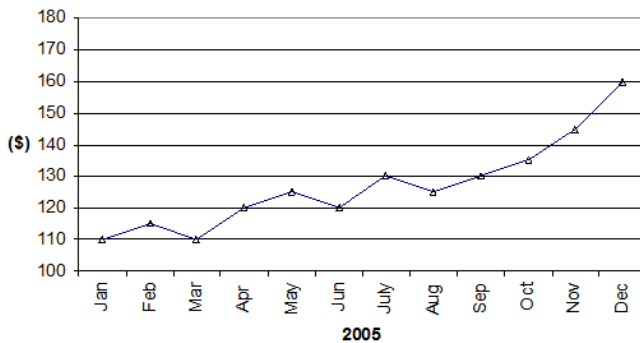


4. The following broken line graph illustrates the number of MP3 players and digital cameras sold at BestBuy in Metrotown throughout the year of 2011. Use the graph to answer the following questions.



- In which month were the most MP3's sold?
  - In which month were the least MP3's sold?
  - In which month were the most digital cameras sold?
  - In how many months were MP3's sold more than digital cameras?
5. The following score shows the height (cm) of the students in a class. Construct a Frequency Table to organize the data: 127, 115, 129, 140, 150, 153, 145, 122, 107, 165, 171, 180, 176, 144, 143, 154, 161, 175, 161, 129, 181, 155, 147, 159, 145, 146, 152, 133, 132, 137, 138, and 143

6. The following graph shows the stock value of RIM Inc. for 2005. Use the graph to answer the following questions



- Which month was the stock value at its peak?
- Which months did the stock price drop?
- Which months would be the best time to buy/sell the stock? Explain why:
- Which months did the stock price increase the most? Why?